

# NetUpdate User's Manual



## **NetUpdate for Macintosh**

© 1999 - 2002 Intego, Inc. All Rights Reserved

Intego, Inc.  
6301 Collins Avenue  
Suite 1806  
Miami, FL 33141  
[www.intego.com](http://www.intego.com)

This manual was written for use with NetUpdate software for Macintosh. This manual and the NetUpdate software described in it are copyrighted, with all rights reserved. This manual and the NetUpdate software may not be copied, except as otherwise provided in your software license or as expressly permitted in writing by Intego, Inc.

The Software is owned by Intego and its suppliers, and its structure, organization and code are the valuable trade secrets of Intego and its suppliers. The Software is protected by United States Copyright Law and International Treaty provisions.



**Contents**

- About NetUpdate ..... 4**
- Using NetUpdate..... 4
- Setting up NetUpdate..... 4
- Checking for Updates..... 6
- Downloading Updates ..... 8
- Purchasing Intego Software ..... 10
- Selecting NetUpdate Options..... 11
- Email and password ..... 12
- Updated Software ..... 13
- Technical Support ..... 14**



## About NetUpdate

NetUpdate is an application that Intego's programs can use to check if updates are available. This application is installed at the same time as other Intego applications, and is installed as a Preference Pane. It checks for updates of all Intego programs at the same time, and downloads and installs those for the programs installed on your computer.

NetUpdate can carry out automatic checks, at the frequency you choose, or it can be used to make manual checks whenever you wish.

## Using NetUpdate

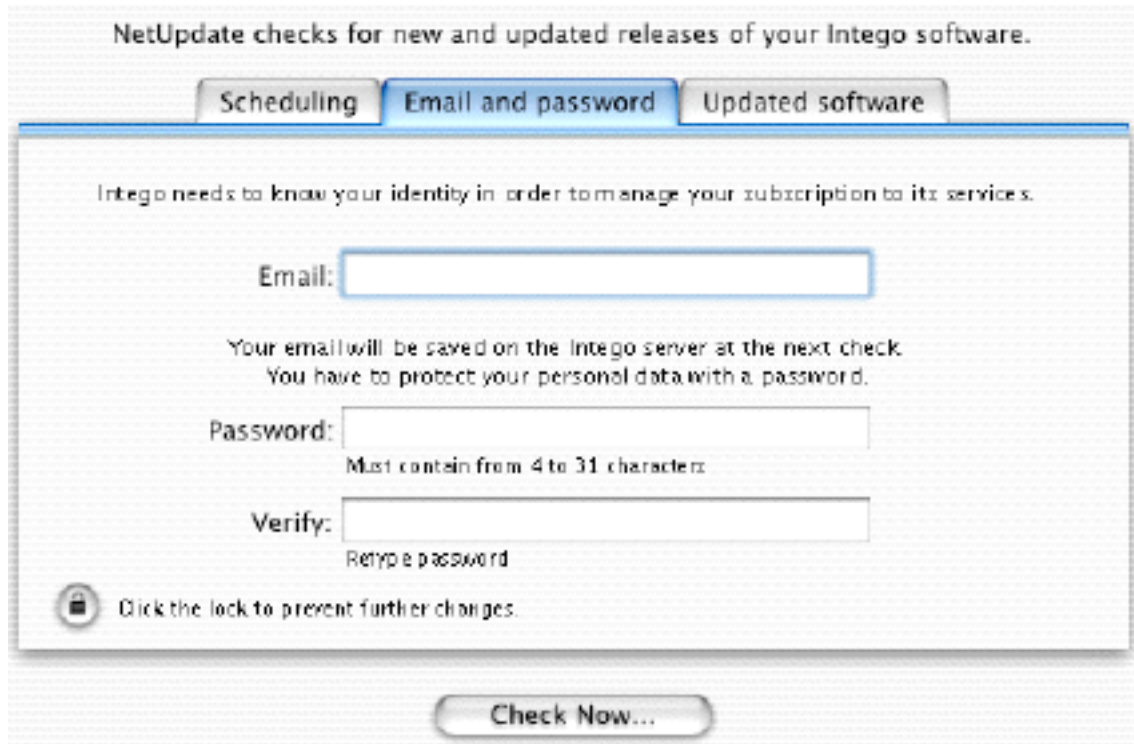
NetUpdate can be used for either manual or automatic checks.

## Setting up NetUpdate

NetUpdate is installed as an additional Preference Pane in the Mac OS X System Preferences, and is displayed at the bottom of the System Preferences window, in the Other section. To open NetUpdate in this way, select the Apple menu > System Preferences... then click Intego NetUpdate.



The first time you use NetUpdate, you will need to enter your e-mail address and a password. When you open the NetUpdate preference pane, the Email and password tab is displayed.



NetUpdate checks for new and updated releases of your Intego software.

Scheduling **Email and password** Updated software


Intego needs to know your identity in order to manage your subscription to its services.

Email:

Your email will be saved on the Intego server at the next check.  
You have to protect your personal data with a password.

Password:   
Must contain from 4 to 31 characters

Verify:   
Retype password

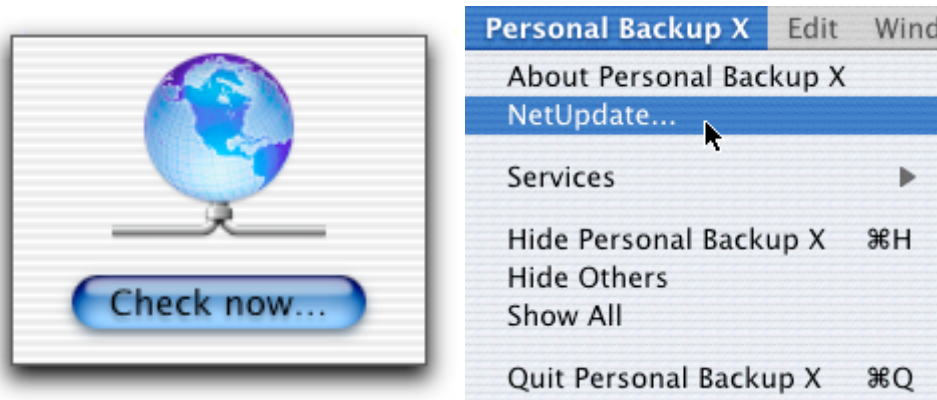
 Click the lock to prevent further changes.

Enter your e-mail address in the Email field, then enter a password in the Password field. (This password must be from 4 to 31 characters.) Retype your password in the Verify field to ensure that it is correct. Keep a record of this password in a safe place; you will need it to access the Intego update server.

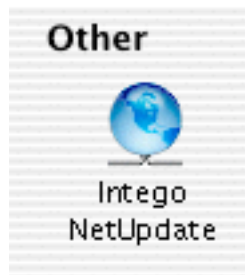


## Checking for Updates

Each of Intego's programs contains a Check now... button either on the main interface or in its preferences, or a NetUpdate menu item in the application's menu. To check for updates, click this button or select this menu item:



You can also check for updates by opening the Mac OS X System Preferences - it is installed as an additional Preference Pane, and is displayed at the bottom of the System Preferences window, in the Other section.



To carry out a manual check right away, just click the Check now... button. The NetUpdate application will open and connect to Intego's server to determine whether you have the latest versions of any Intego programs you have installed on

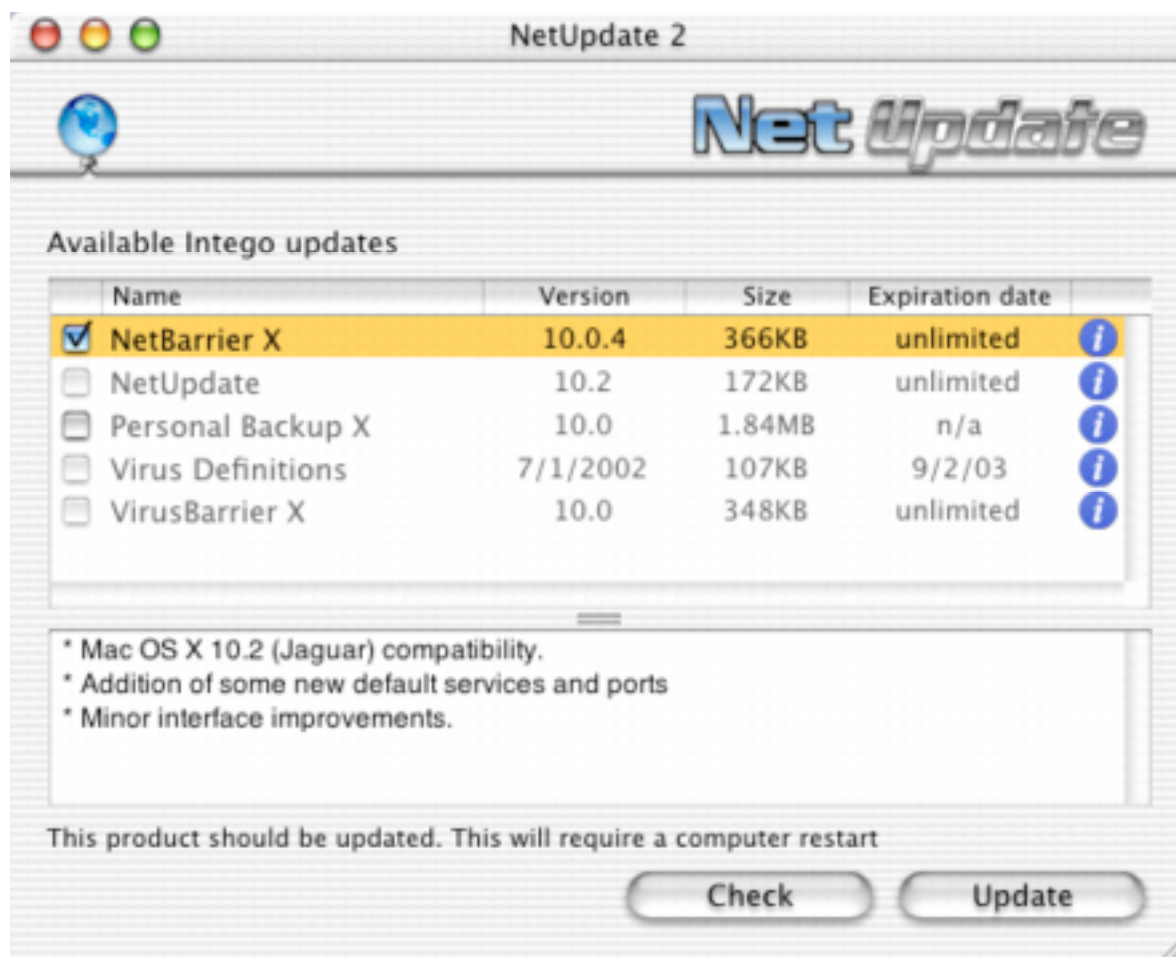


your computer. If there are new versions, you will be able to download them and the updates will install automatically.



## Downloading Updates

You will see a list of available updates. For each program, the name, version, size of the update and expiration date of your subscription (if any) are shown. Select one of the Intego programs installed on your computer, by checking its check box, and click the Update button.

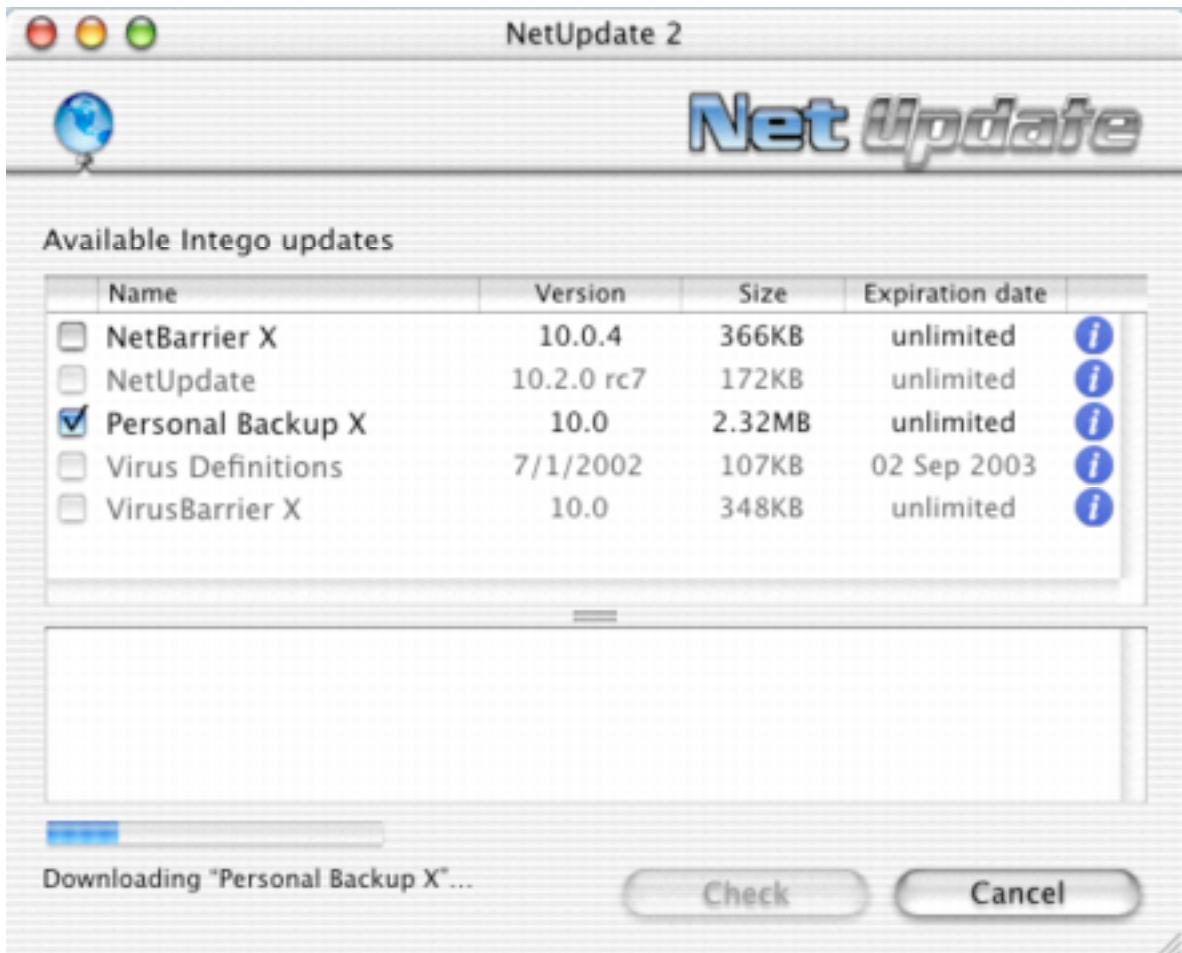


A dialog box will be displayed asking you for your administrator's password; only users with administrator's privileges can download updates with NetUpdate.



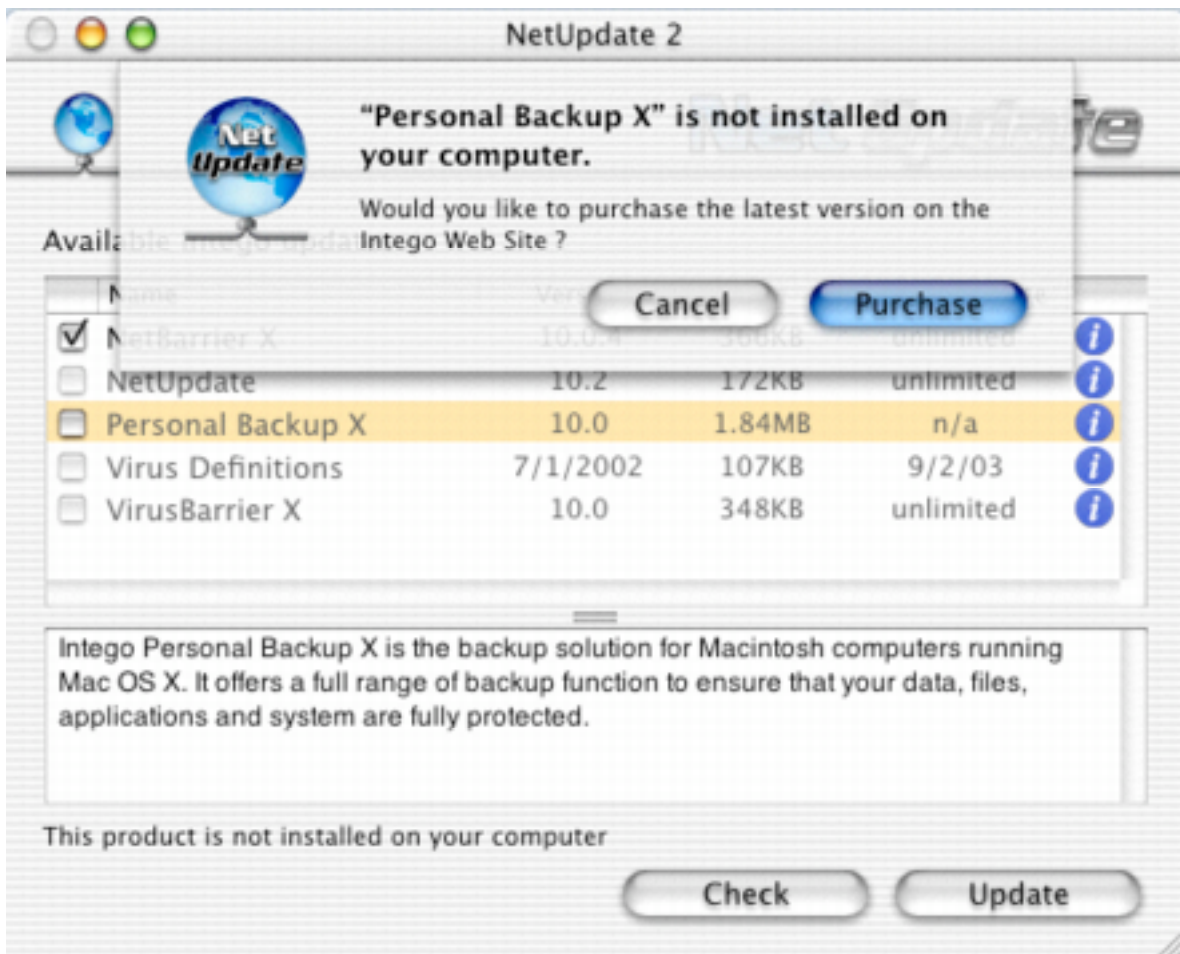


After the correct password has been entered, the selected updater(s) will be automatically downloaded to your computer, and will be installed as soon as downloading is completed.



## Purchasing Intego Software

For programs that are not installed on your computer, you will be given the possibility to purchase them immediately from the Intego web site.

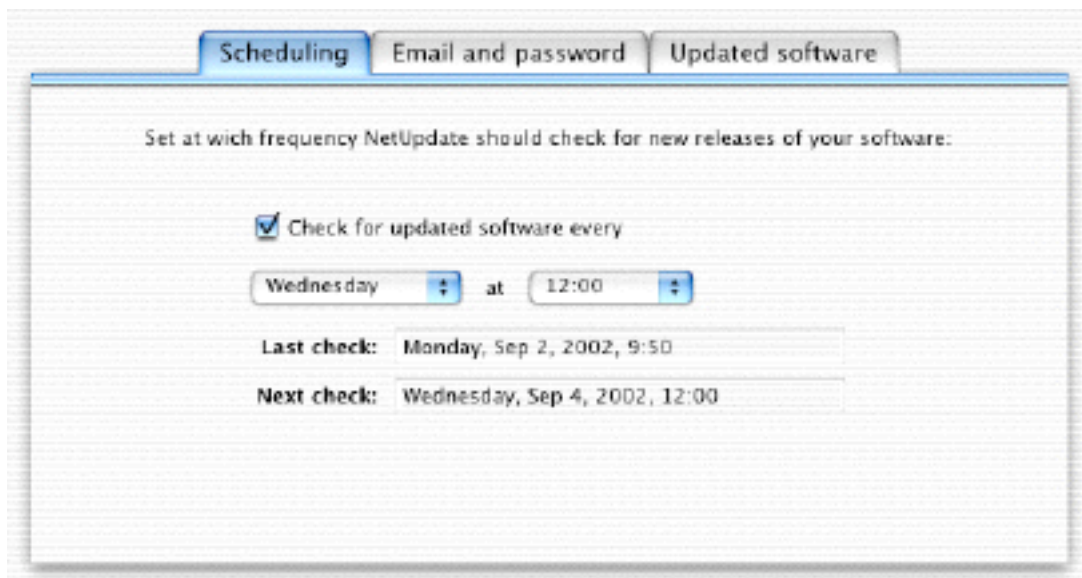


Click Purchase to go to the Intego web site and purchase the selected program.



## Selecting NetUpdate Options

Several options are available to configure NetUpdate. To set these options, open NetUpdate, in any of the ways presented above. The NetUpdate preference pane contains three tabs: Scheduling, Email and password, and Updated software.



### Scheduling

You can set NetUpdate to check for new versions of your software automatically. This tab allows you to choose the frequency for these checks.

#### **Check for updated software every**

If you check this option, NetUpdate will automatically check for updates. When this occurs, the NetUpdate application will open and connect to the Intego ftp site to look for updates. If you do not check this option, you can manually check for updates by clicking the Check now... button (see above). The next section allows you to choose at



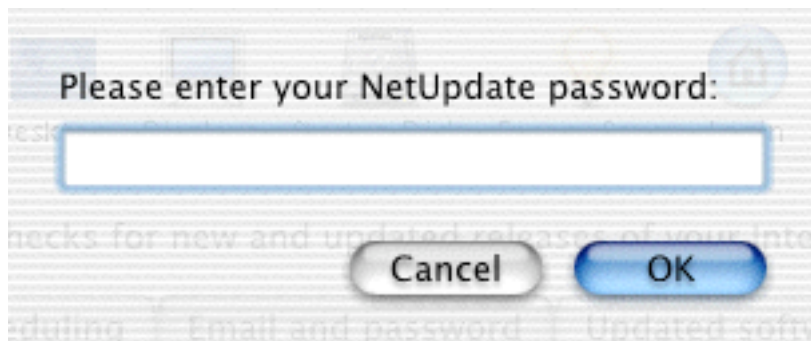
what frequency the updates will occur. Choose a day of the week, and a time.

### **Last check and Next check**

This shows the date and time of the last check made (either automatically or manually) and the next check, if updating is scheduled automatically.

### **Email and password**

This tab lets you change your e-mail address and password. To do so, click the lock to make changes. You will be asked to enter your NetUpdate password.



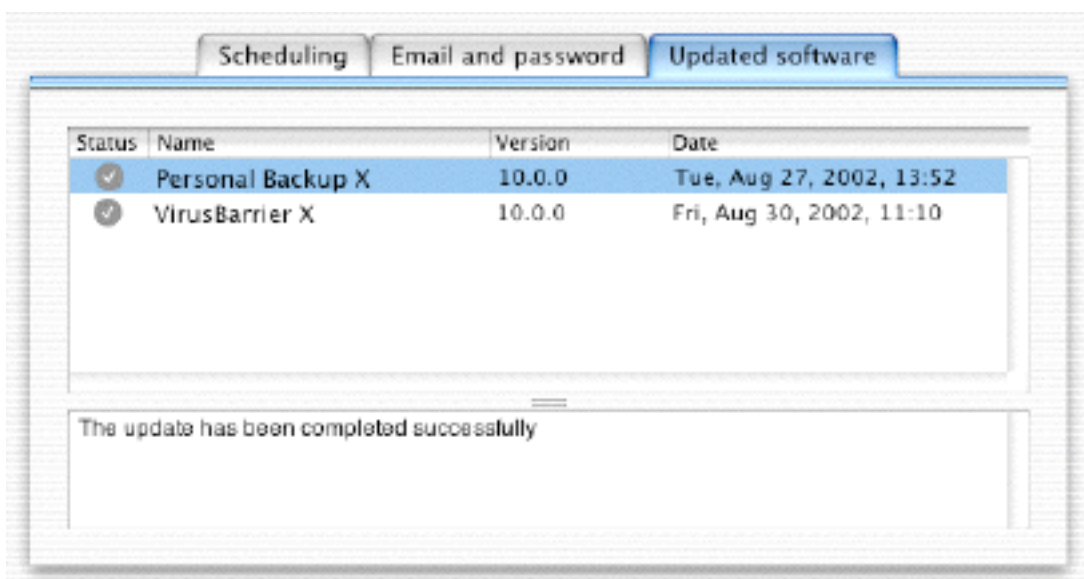
Enter your password and click OK. You can now change your e-mail address and password.

If you enter your password incorrectly three times, a dialogue will ask you if you want the Intego server to send you your password by e-mail to your registered e-mail address.



## Updated Software

This tab shows a log of the updates you have made to your Intego software. Each update that NetUpdate has made is listed here. For information on the update, select one of them, and comments are displayed in the bottom section.



## **Technical Support**

Technical support is available for registered purchasers of Intego products.

### **By e-mail**

[support@intego.com](mailto:support@intego.com)

### **From the Intego web site**

[www.intego.com](http://www.intego.com)

